



WE310F5-I/P

Quick Setup Guide

1VV0301671 Rev. 7 – 2021-07-16

Program the WE310F5 Module

1. Connect the micro-USB **UART1** port to your system.
 2. Change the toggle switch position to **Program**.
 3. Download and unzip the **Telit_Wifi_Image_Tool**.
For download information, see [Resource Links](#).
 4. Open the **Telit_Wifi_Image_Tool** folder.
 5. Open the **Telit_Wifi_Image_Tool** application.
 6. Click **Browse**.
 7. Navigate to the **Telit_Wifi_Image_Tool** and select **s2w.bin** file.
 8. To initiate the flash, click **Program**.
 9. After the flash process is complete, click **OK**.
 10. Close the **Telit_Wifi_Image_Tool**.
- The WE310F5 EVB is ready to configure.

Configure the WE310F5 Module

1. Connect the micro-USB cable to the **UART0** port.
 2. Change the toggle switch position to **Run**.
 3. Open **Tera Term** > **Setup** > **Serial Port**.
 4. Set the **BAUD rate**.
- The WE310F5 EVB is ready to use.

Prerequisites:

- Ensure to connect the module and the node to the same WPA2 Secured Wi-Fi network.
- Insert the SIM card in the appropriate SIM card slot.

Wireless Mode- Station Mode

1. To set the module in Station Mode: `AT+WNI=0`.
2. To connect the network to L3:
3. `AT+WNCN=1,"Telit_WiFi","Password123",11`

Wireless Mode- AP Mode

1. To set the module in AP Mode: `AT+WNI=1`.
2. To configure the IP:
`AT+WNIPC=0,1,192.168.5.1,255.255.255.0,192.168.5.1`
3. To configure the node in AP Mode:
`AT+WNAIPC=0,192.168.5.3,192.168.5.20,86400000`

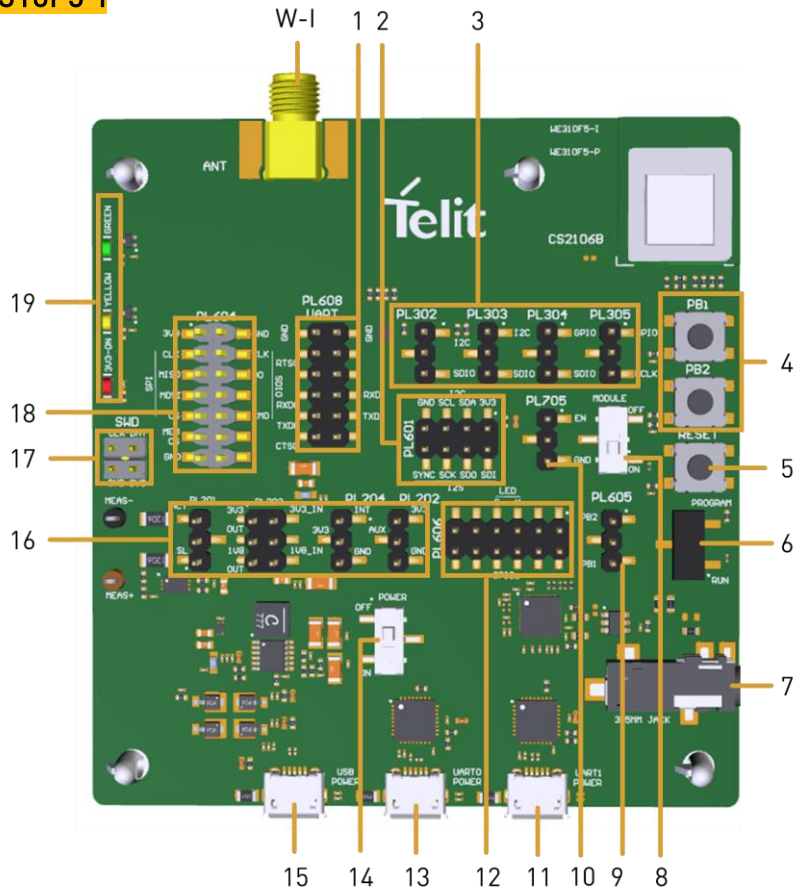
Bluetooth Mode- Station Mode

1. To scan the available Bluetooth devices: `AT+BI=1`.
2. For DUT peripheral connection:

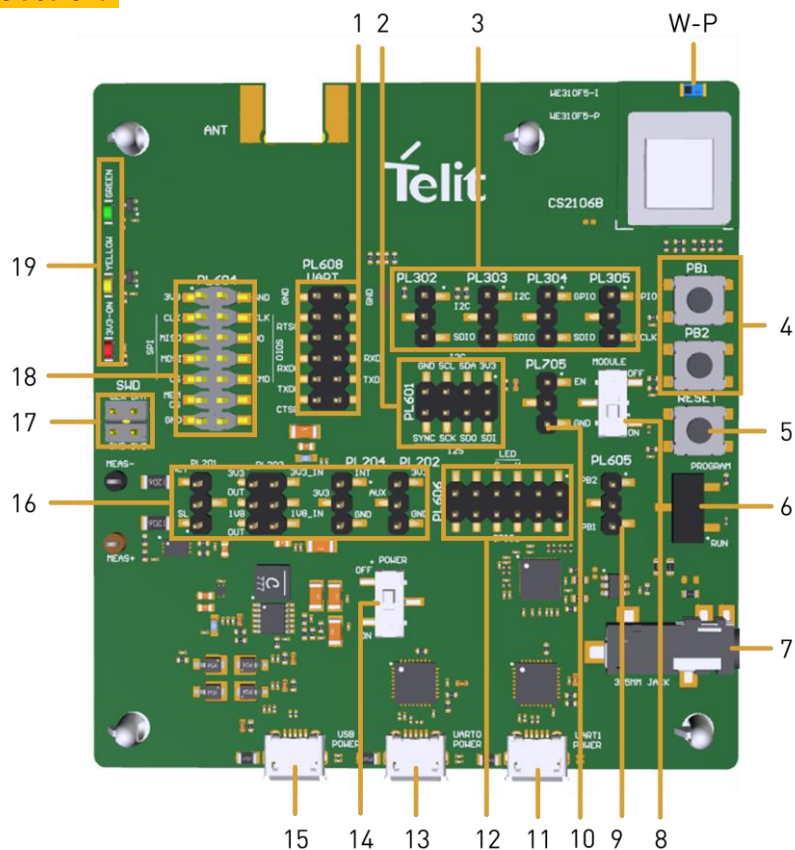
```
Device 1
AT&W0
AT+YSR
AT+BI=1
AT+BICAP=0
AT+BADVINTMIN=60
AT+BADVINTMAX=60
AT+BADVE=1
AT+BATTRIB="pserv","uuid=1234"
AT+BATTRIB="char","prop=0x0c","uuid=5678"
AT+BATTRIB="charval","perm=0011","len=1","val=0x30"
AT+BATTRIB="complete"
AT+BOAD
AT+BI=1
AT+BCONINTMAX=1000
AT+BCONINTMIN=1000
AT+BCONNECT="00217E368'22","t2"
```

WE310F5 Products

WE310F5-I



WE310F5-P



WE310F5 Callouts

| | |
|---|------------------------------|
| W-I WE310F5-I Antenna Connector | 10 ARDUINO Enable (PL705) |
| W-P WE310F5-P RF Pad | 11 UART1 |
| 1 UART (PL608) | 12 GPIO- LED (PL606) |
| 2 I2S-I2C (PL601) | 13 UART0 |
| 3 GPIO - Alternate Function (PL302 - PL305) | 14 Power Switch- EVB |
| 4 General Purpose Button (PB1-PB2) | 15 Power connector USB 2.0 |
| 5 Reset Button | 16 Power Config (PL201-P204) |
| 6 RUN/ PROGRAM Toggle Switch | 17 SWD |
| 7 Audio Jack | 18 SPI-SDIO (PL604) |
| 8 Power Switch- Module | 19 LED |
| 9 PB1-PB2 (PL605) | |

Resource Links:

- Telit_Wifi_Image_Tool = https://www.telit.com/wp-content/uploads/2021/06/Telit_WE310F5_39.00.001-1.zip
For latest Firmware version, visit <https://www.telit.com/support-training/download-zone/>
For more information, visit <https://www.telit.com/products/wifi-and-bluetooth/#wifi>
- For technical support, email us at TS-SRD@telit.com
- For a video demonstration, see <https://www.telit.com/developer-zone/we310f5-i-p-evb/>

WE310F5-I/P Evaluation Board

The Telit EVB is a rapid IoT development kit that reduces the duration of IoT prototyping cycles from a matter of weeks or months to mere hours, all by capitalizing on the combination of embedded IoT software and hardware.

The system was designed to provide a complete development environment to the user and intended for use with the Telit WE310F5-I/P module and Arduino Uno Rev3 board.

